



# BLANC SHOTS OF LOCATION

## PICTURE DESTINATION

- More than 50 backdrops
- 3 acre property
- Air conditioned makeup- changing room
- More than 20 indoor aircooled setups
- 2km from Delhi border
- OLA/Uber, Zomato / Swiggy available

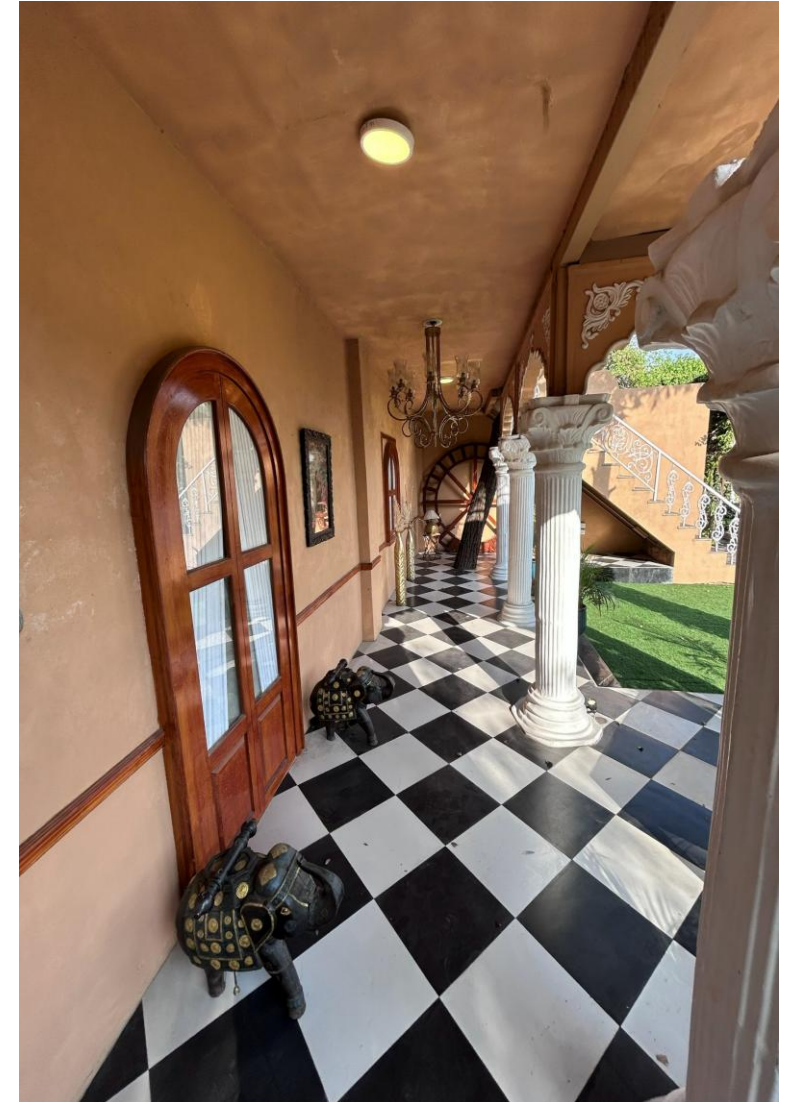
## Bikaneri Mahal

A grand double-storey heritage-style set featuring elegant white classical pillars, intricately carved arches, and a beautifully detailed balcony railing. The façade is inspired by royal Indian architecture, with symmetrical columns framing a central arched entrance that adds depth and cinematic appeal.



## Bikaneri Mahal

The black-and-white checkered flooring enhances the regal look, while soft pastel walls and ornamental detailing create a timeless, luxurious atmosphere. Natural light filters in from the open courtyard, making the set ideal for both daytime and evening shoots.



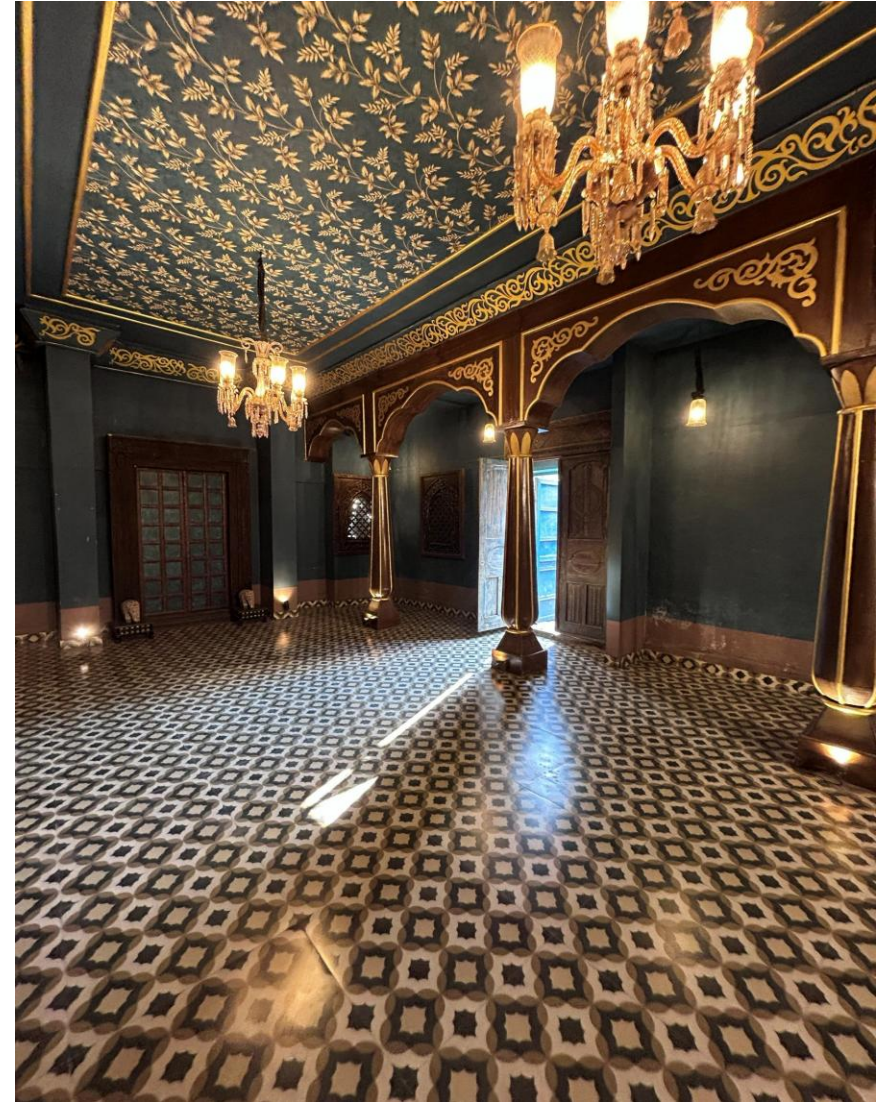
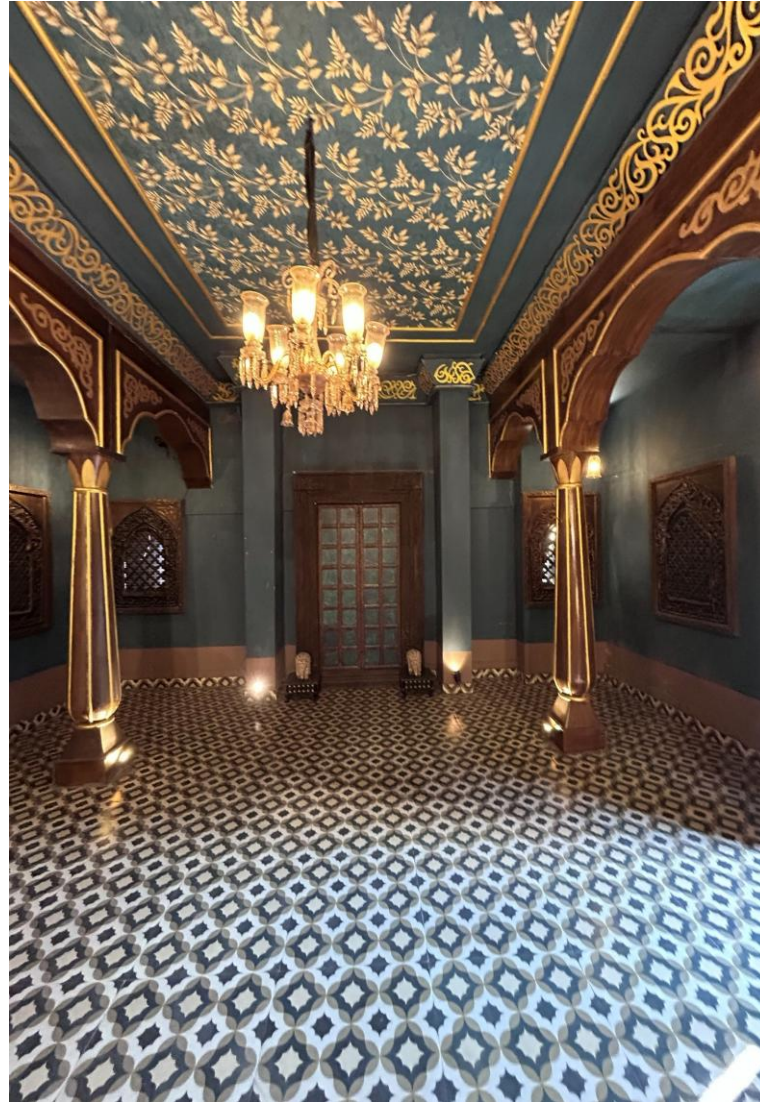
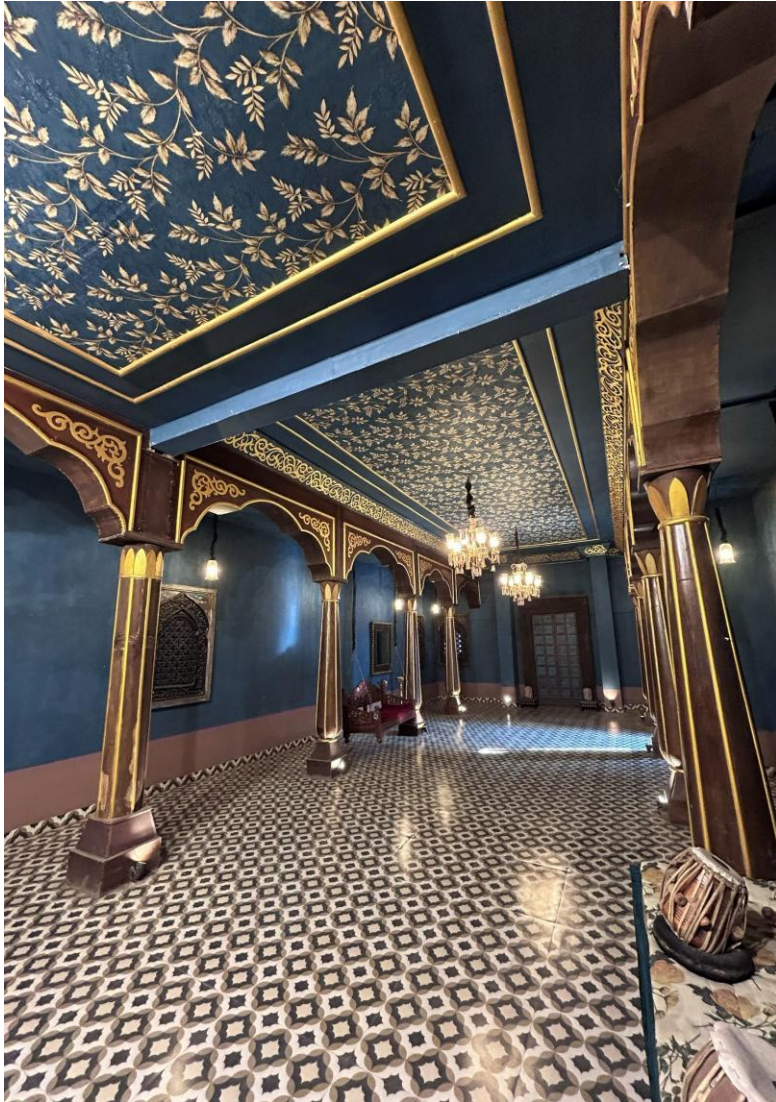
# Bikaneri Mahal

A versatile, aesthetically rich set that photographs exceptionally well from multiple angles and levels.  
Wrapped in tradition, styled with intention



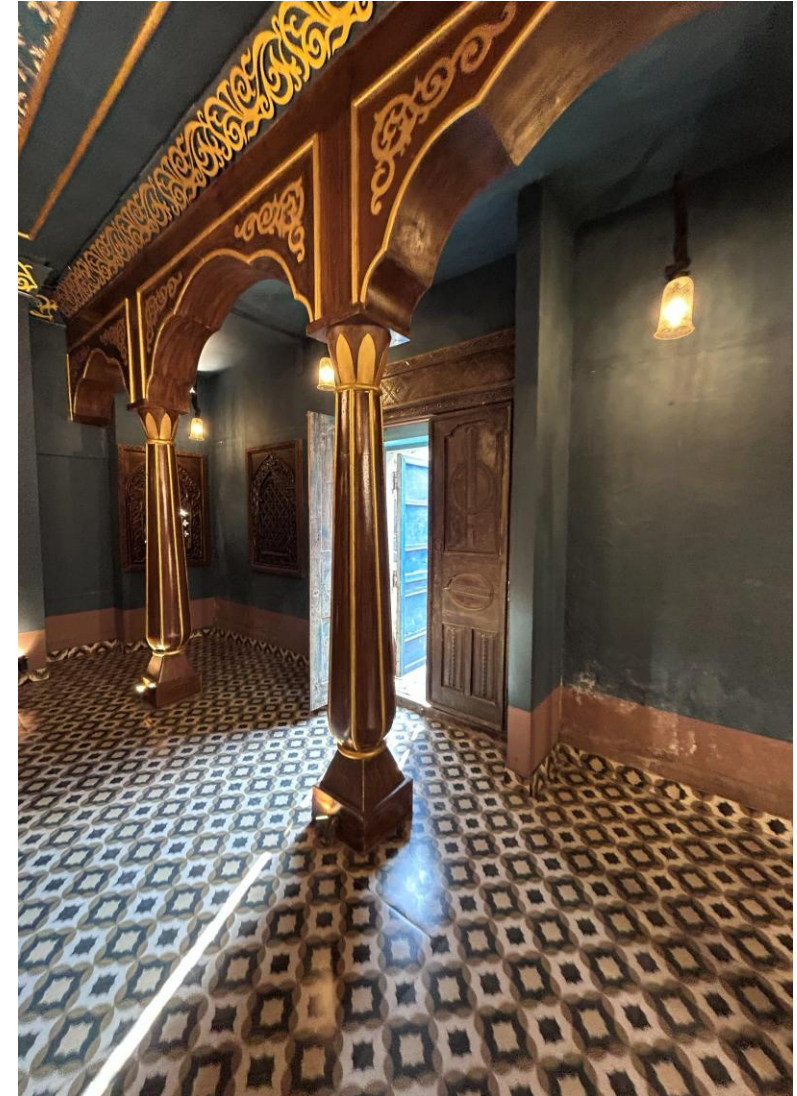
## Mughal palace

A grand indoor set inspired by the elegance of Mughal royal palaces, featuring majestic arched corridors, decorative columns, intricate ceiling patterns, and classic chandeliers. The deep-toned walls combined with the patterned flooring create a dramatic and luxurious atmosphere



# MUGHAL PALACE

The long hallway perspective, royal pillars, and warm lighting give the space a cinematic palace feel, perfect for creating regal and historical visuals. The set also includes traditional musical elements like table, sitar etc, adding cultural depth and authenticity.



## MUGHAL PALACE

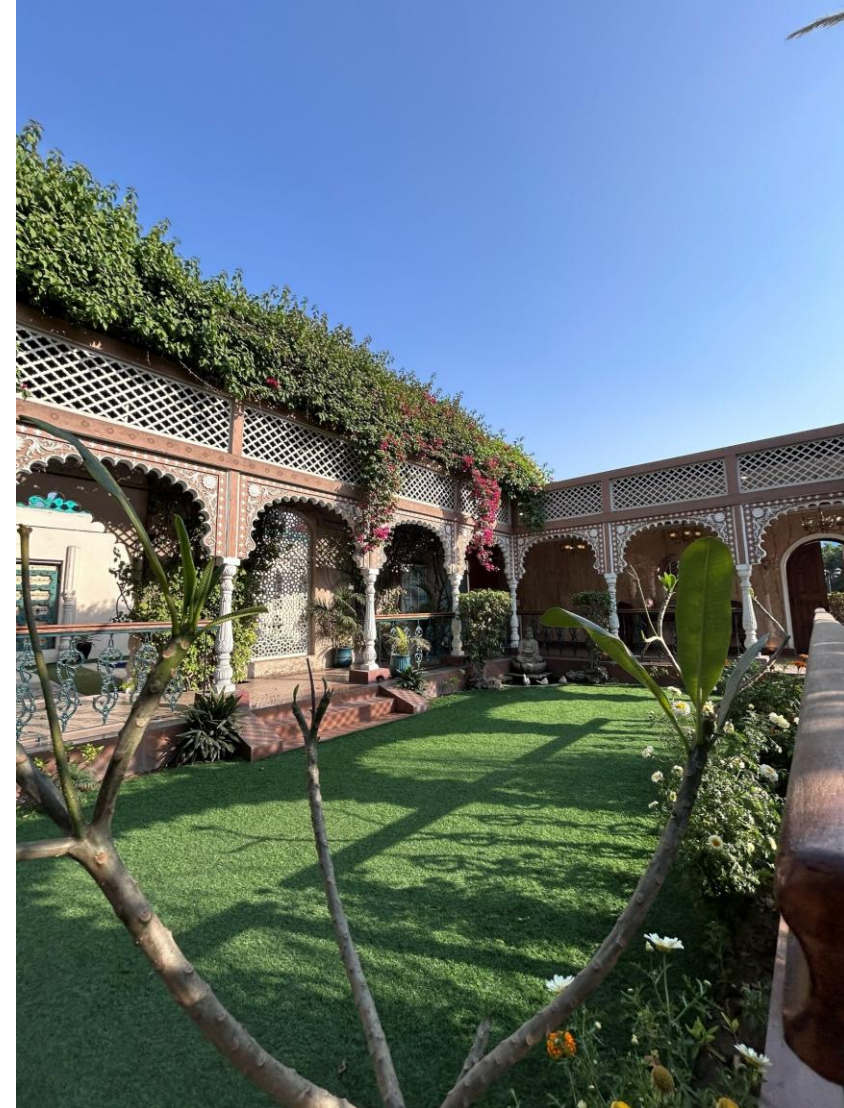
This set is ideal for fashion shoots, music videos, bridal photography, cultural campaigns, and cinematic storytelling, offering a rich and royal backdrop that captures the essence of Mughal-era architecture.





## Raj Mahal

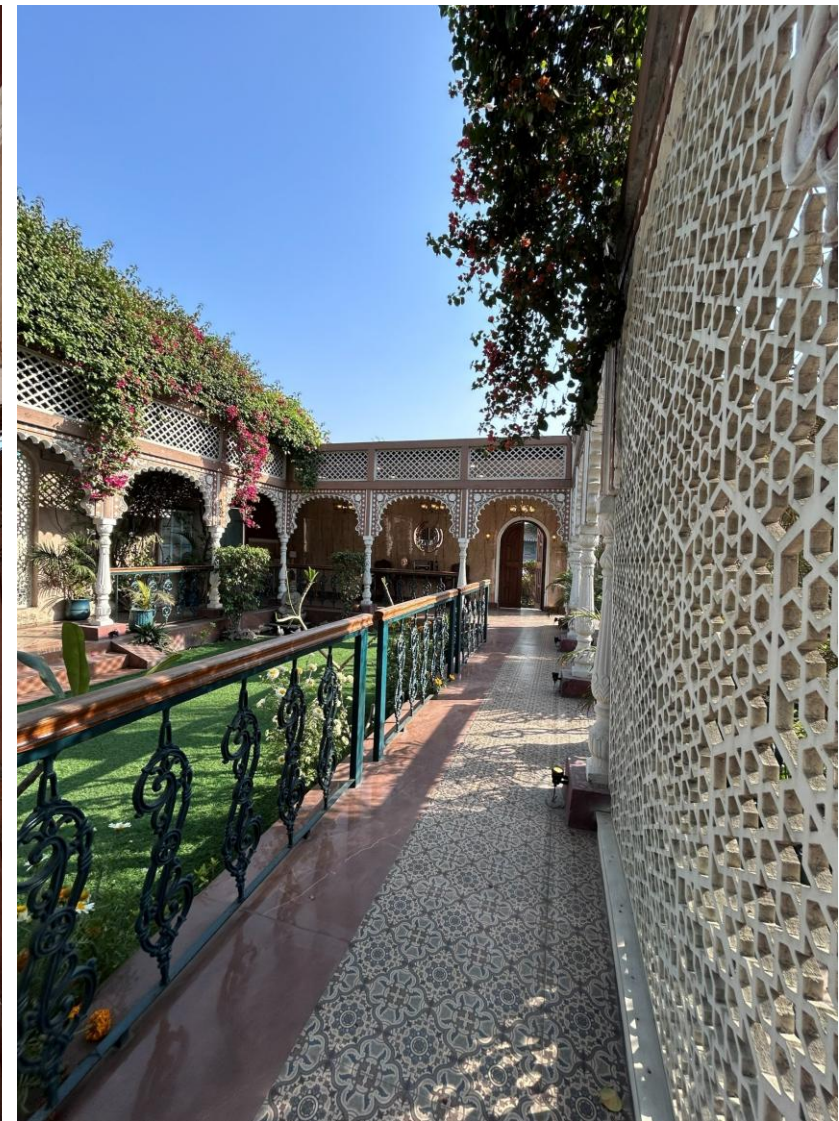
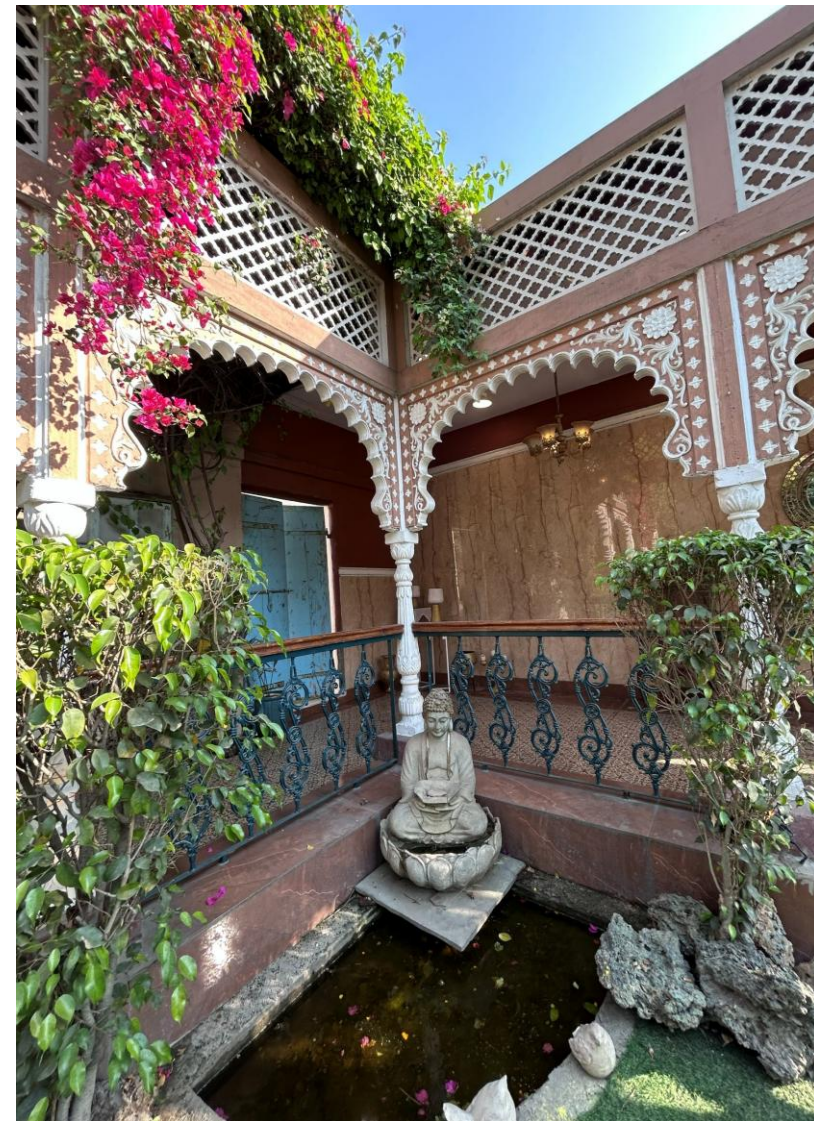
A majestic outdoor courtyard inspired by royal palace architecture, featuring long corridors of elegant arches, traditional columns, and heritage stone textures. The open lawn courtyard surrounded by palace-style verandahs creates a spacious and regal environment.





## Raj Mahal

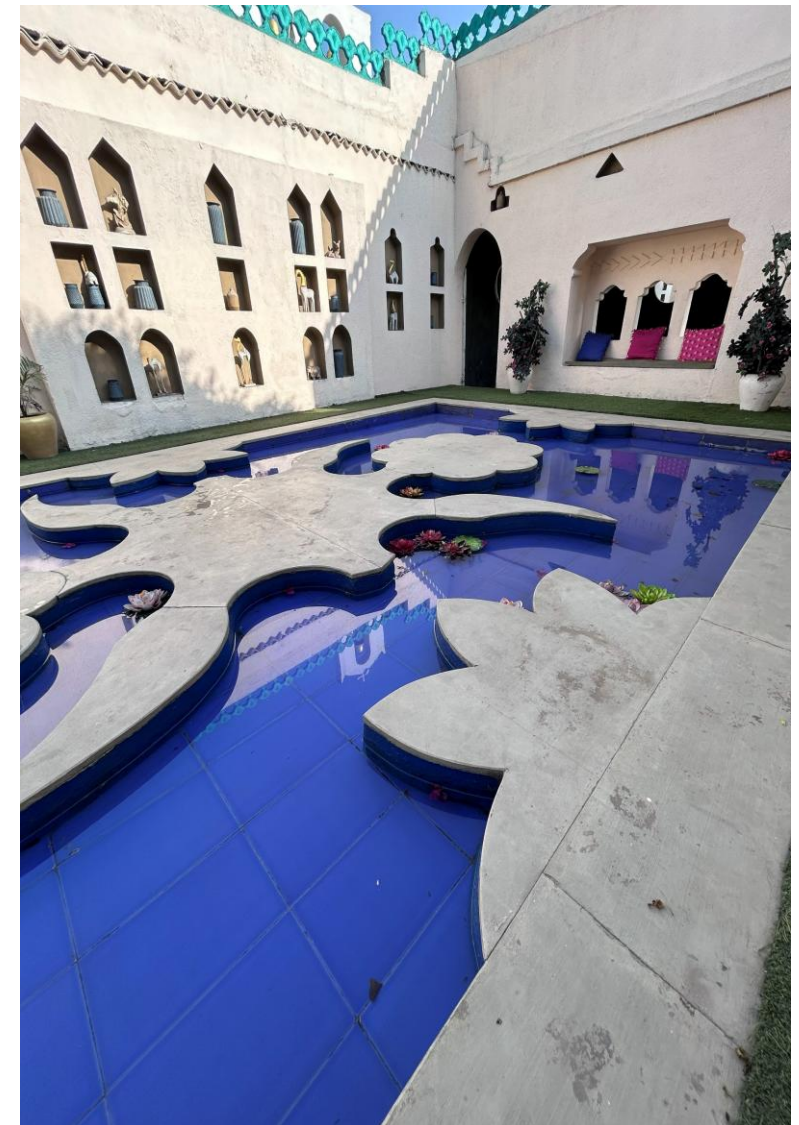
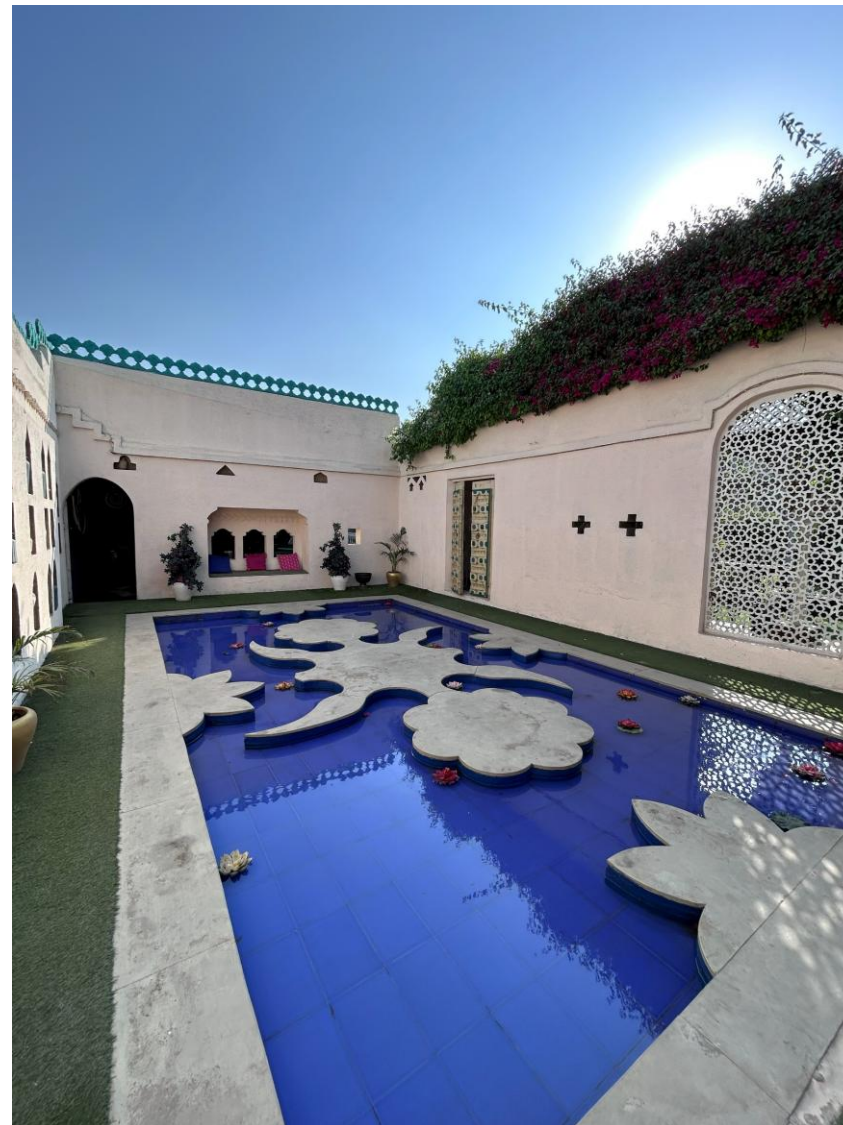
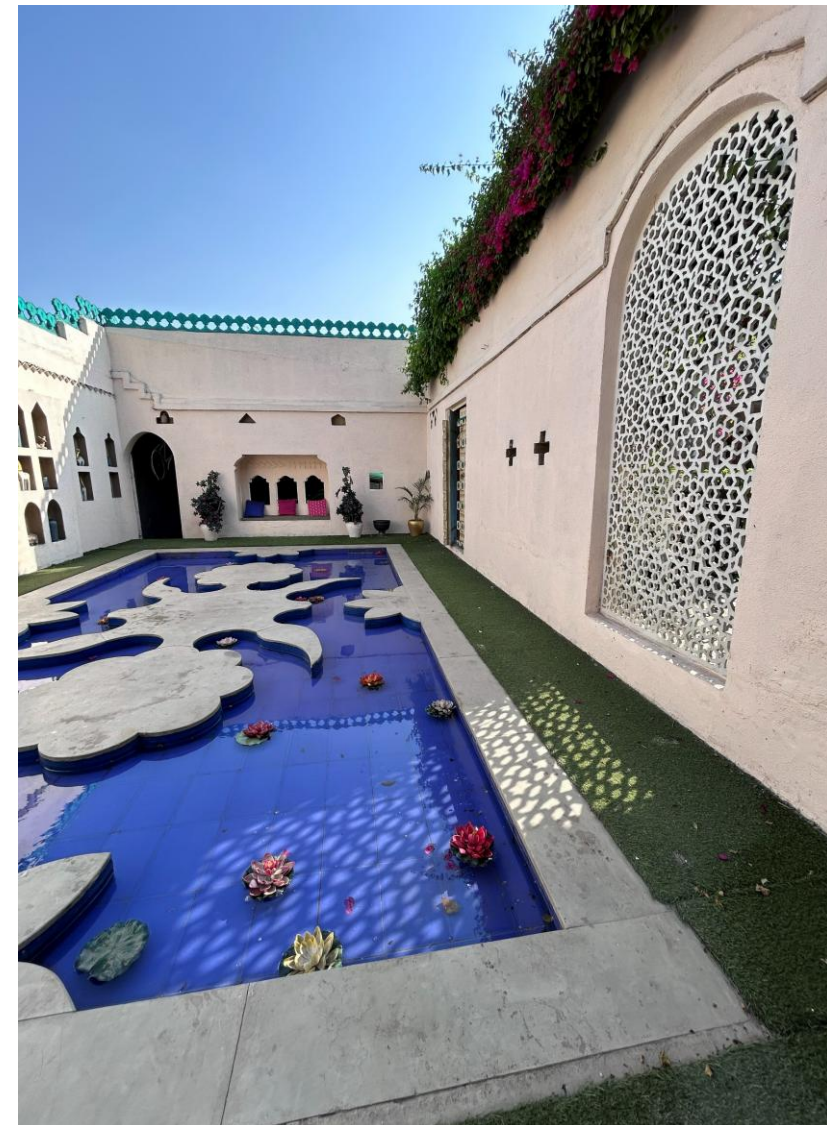
The symmetry of the arches, natural sunlight, and lush greenery bring a royal garden palace vibe, perfect for creating grand cinematic visuals. The combination of architectural depth and open space allows for dynamic wide-angle shots and elegant compositions.





## RAJASTHANI SET

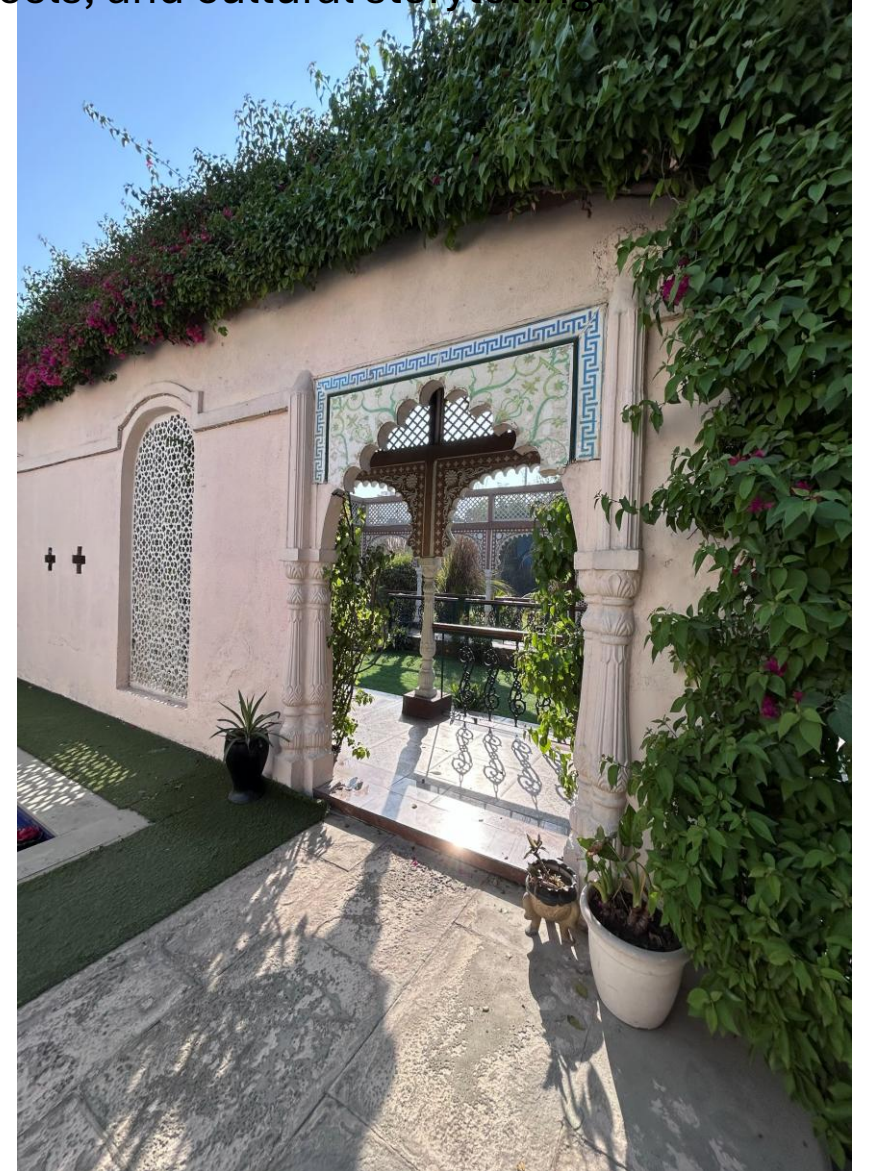
A beautifully designed traditional Rajasthani courtyard inspired by royal haveli architecture. The set features elegant arched doorways, textured white walls, intricate jali windows, and hand-crafted traditional doors that reflect the charm of Rajasthan's heritage.





## RAJASTHANI SET

At the center lies a blue water courtyard with artistic stepping platforms, adding a unique visual element and depth to the space. Natural light, heritage details, and earthy textures make this set perfect for fashion shoots, product photography, pre-wedding shoots, reels, and cultural storytelling.





## RAJASTHANI SET

The combination of traditional architecture, open courtyard layout, and aesthetic water feature creates a cinematic backdrop that captures the essence of a royal Rajasthani haveli atmosphere.



## Diwan-e-khas

Inspired by the royal private audience halls of Mughal palaces, the Deewan-e-Khas set captures the elegance and intimacy of a regal interior space. The set features a dramatic curved staircase, ornate chandeliers, richly colored walls, and a gallery of vintage frames that evoke the charm of a royal residence.





## Diwan-e-khas

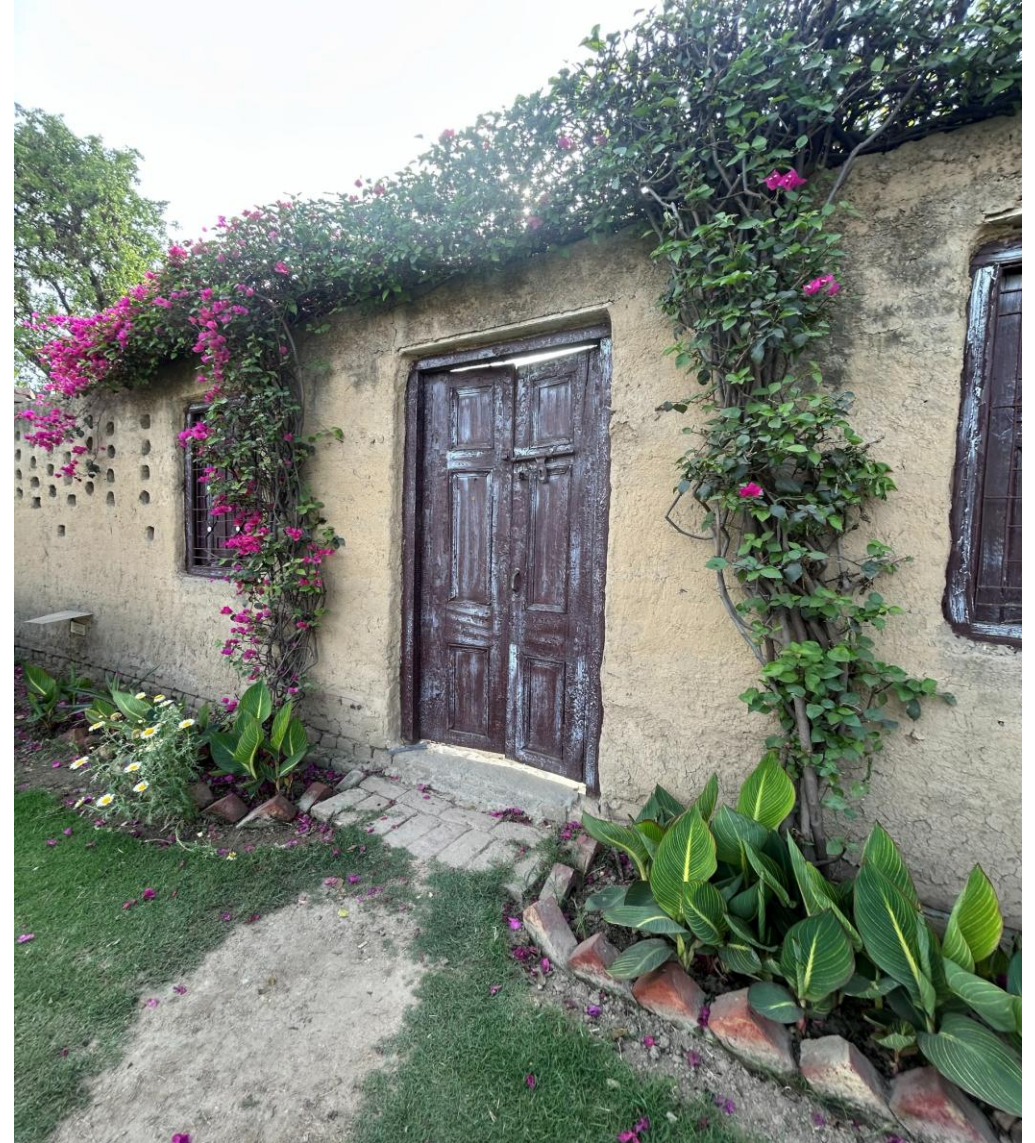
Traditional carpets, elegant drapery, and classic décor elements create a luxurious vintage ambiance, while the grand staircase becomes a striking focal point for cinematic compositions and portrait shots. This royal indoor setting is perfect for bridal photography, fashion editorials, music videos, and cinematic storytelling, offering a sophisticated and majestic backdrop.





## VILLAGE SET

Surrounded by rustic architecture, textured walls, and heritage-inspired details, the space captures the essence of an authentic village setting.





## VILLAGE SET

Natural light enhances the earthy tones and raw textures, giving every frame a warm and timeless appeal. The combination of traditional doors, stone pathways, and open courtyards adds depth and character, making it highly versatile for different storytelling styles.





## VILLAGE SET

Perfect for fashion shoots, product photography, pre-wedding shoots, reels, and cultural storytelling, this set offers a blend of simplicity, charm, and visual richness.





## WHITE AND BLACK CYCLORAMA WALL

A sleek and modern cyclorama setup featuring seamless white and black walls designed to create a clean, infinite background effect. With an impressive height of 16 ft, the space allows for grand, uninterrupted frames—perfect for both wide-angle and full-length shoots.

The white section offers a bright, minimal, and high-key aesthetic, ideal for fashion, e-commerce, and product photography. In contrast, the black wall adds depth, drama, and a bold cinematic feel, perfect for striking portraits and luxury shoots.

The smooth curves eliminate harsh edges, ensuring a flawless backdrop for photography and videography. The setup can be easily styled with props, lighting, and themes—making it highly versatile for pre-wedding shoots, brand campaigns, reels, and creative storytelling.





## RUSTIC ARABIC ENTERANCE

A charming entrance setup inspired by old-world architecture, featuring handcrafted brick stairways leading up to a vintage wooden door. Surrounded by lush greenery, potted plants, and subtle rustic elements, the space beautifully captures the warmth and authenticity of a heritage home.



## Vintage Hammam Room

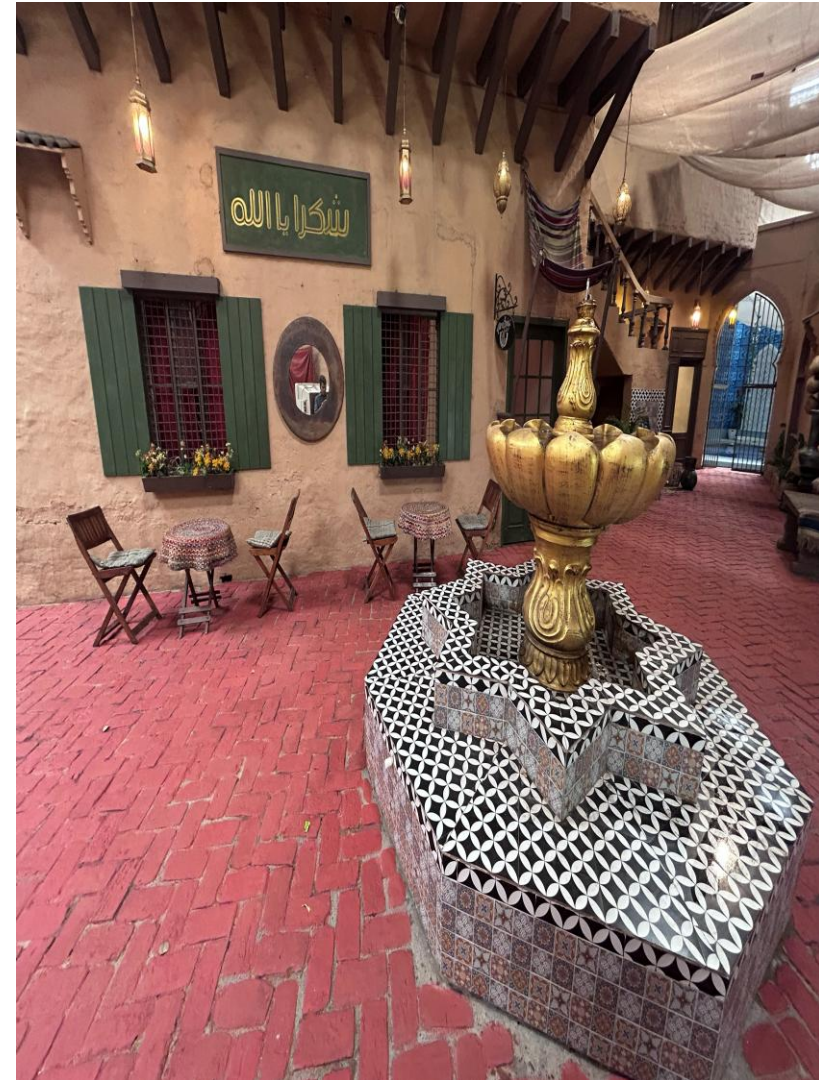
This setup gives a luxurious vintage hammam and Mediterranean palace vibe with warm terracotta textured walls, patterned heritage tiles, and elegant crystal chandeliers. The white clawfoot bathtub placed in the center adds a royal and cinematic touch. Arched doorways, rustic wooden ceilings, and antique décor elements create an old-world European-Moroccan atmosphere with rich textures and depth.





## ARABIC SET

This Arabic-inspired set captures the charm of a traditional Middle Eastern courtyard with a cinematic, storytelling feel. The space features warm earthy tones with textured walls in shades of terracotta and sand, creating an authentic desert aesthetic. The red brick-style flooring adds depth and richness, enhancing the old-town alley vibe



## ARABIC SET

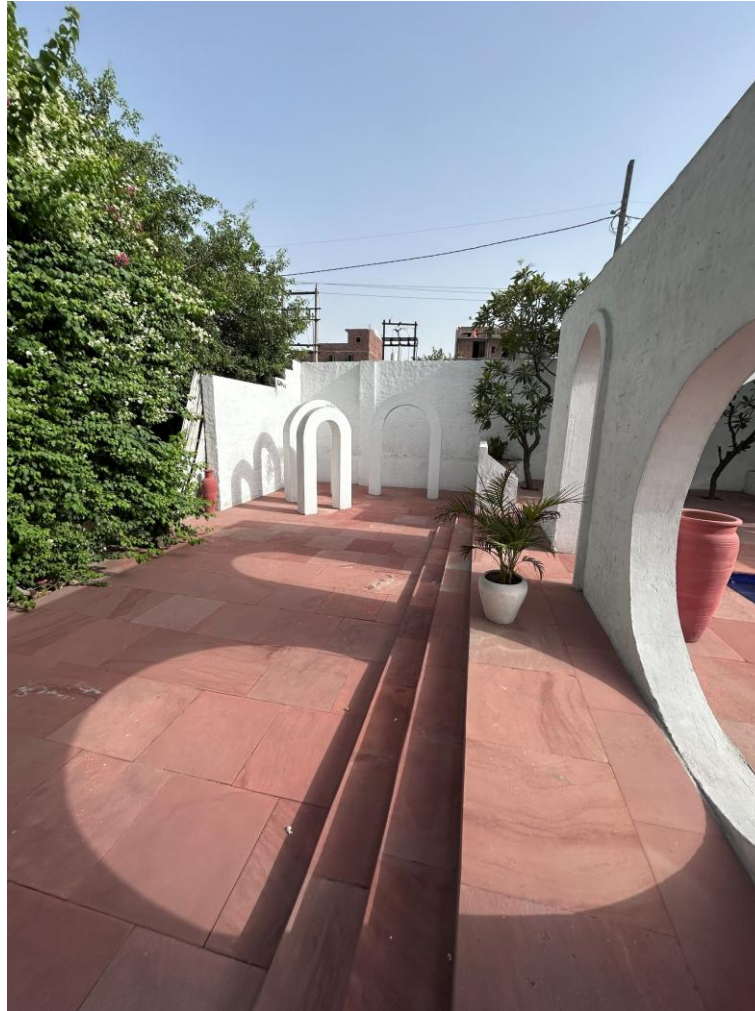
Overhead, flowing drapes and fabric canopies soften the space and diffuse the light beautifully, giving it a dreamy, slightly royal ambiance. The set is styled with antique brass décor pieces, traditional pots, wall hangings, and rustic doors that add cultural character and visual interest. Narrow pathways and arch-style openings create a sense of depth, making it perfect for walkthrough shots, reels, and storytelling sequences. The lighting appears warm and ambient, further enhancing the vintage Arabic souk (market street) feel.





## Bali Vibes

A serene tropical-inspired setup featuring elegant white architecture, curved archways, textured walls, and earthy tones that bring the essence of Bali to life. The space creates a calm, luxurious atmosphere perfect for fashion shoots, pre-wedding sessions, lifestyle content, and cinematic storytelling..



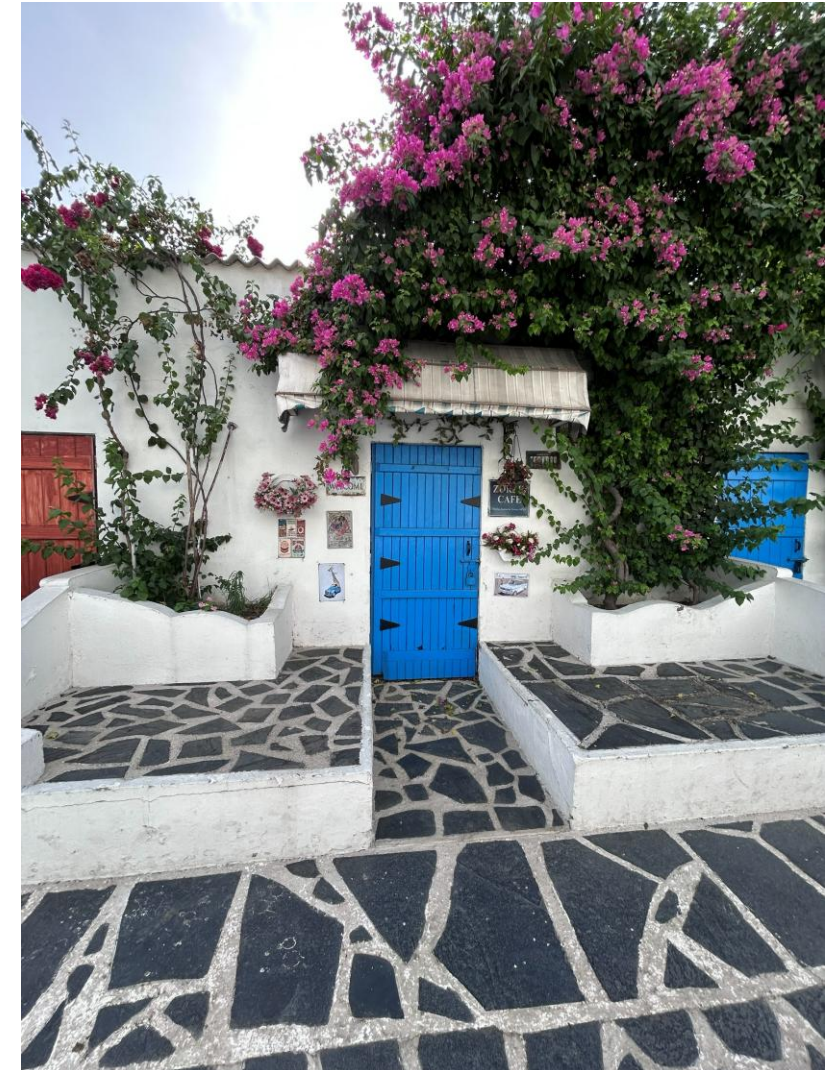
# Bali Vibes

Natural light and minimal aesthetics add depth and sophistication to every frame



# Santorini

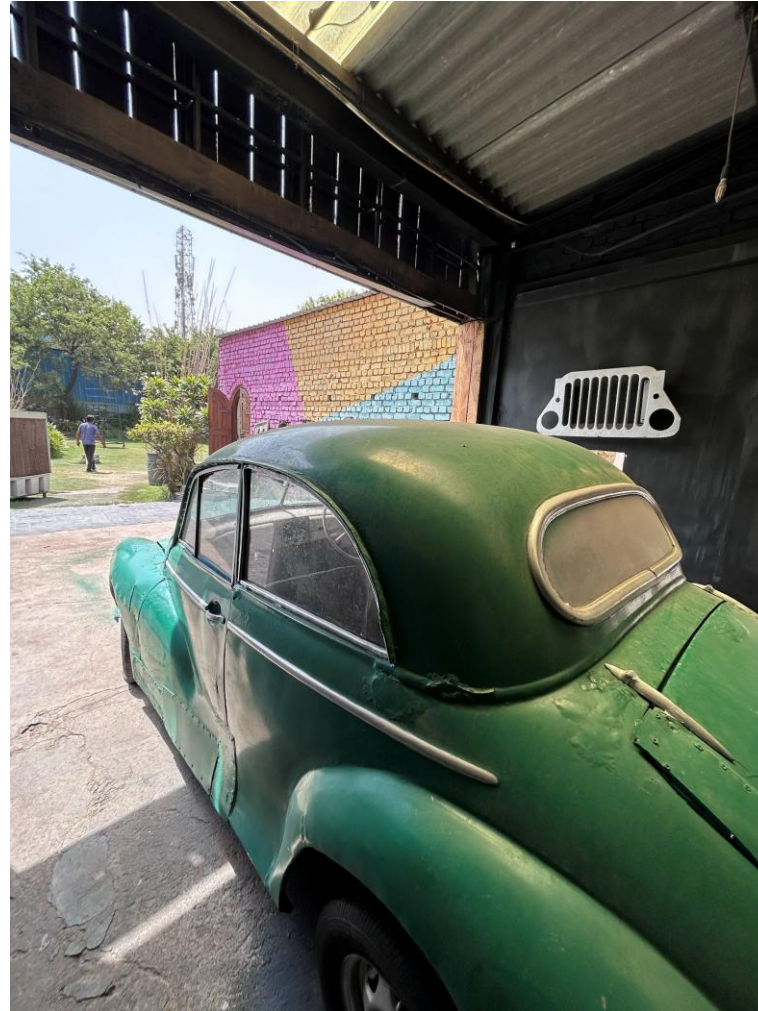
Inspired by the iconic streets of Santorini, this setup showcases whitewashed walls, blue accents, stone pathways, and blooming floral elements that recreate a dreamy Mediterranean escape. The bright and airy vibe makes it ideal for travel-inspired shoots, summer campaigns, café aesthetics, maternity shoots, and vibrant portrait photography.





# Vintage Car Workshop

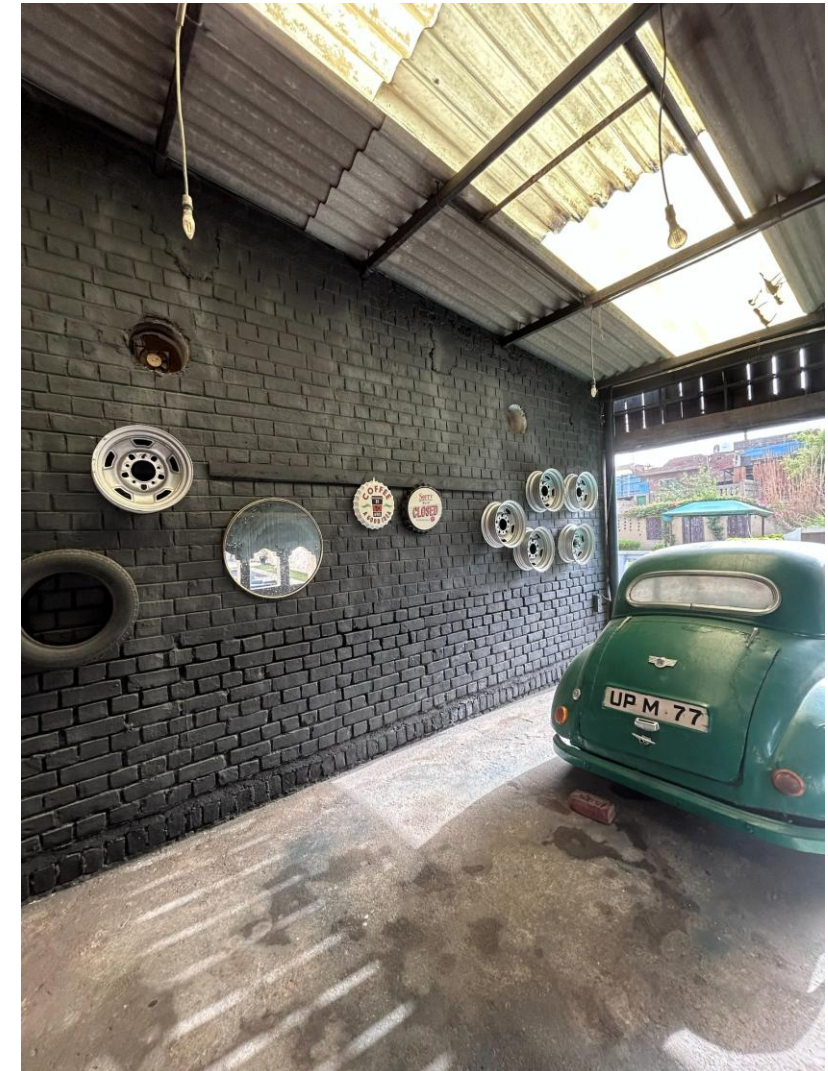
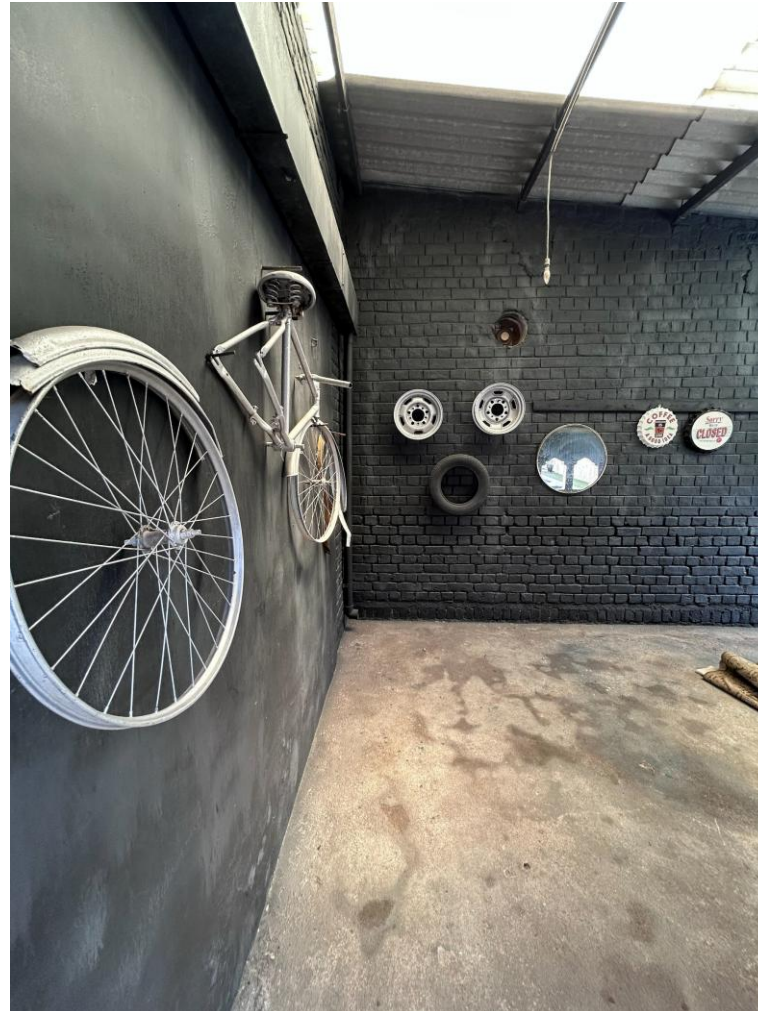
A rustic industrial-style setup designed with aged textures, vintage tools, garage interiors, and a classic retro car that adds timeless character to the frame.





# Vintage Car Workshop

This cinematic space is perfect for automotive shoots, fashion editorials, music videos, street-style photography, and bold storytelling concepts with a raw vintage charm.





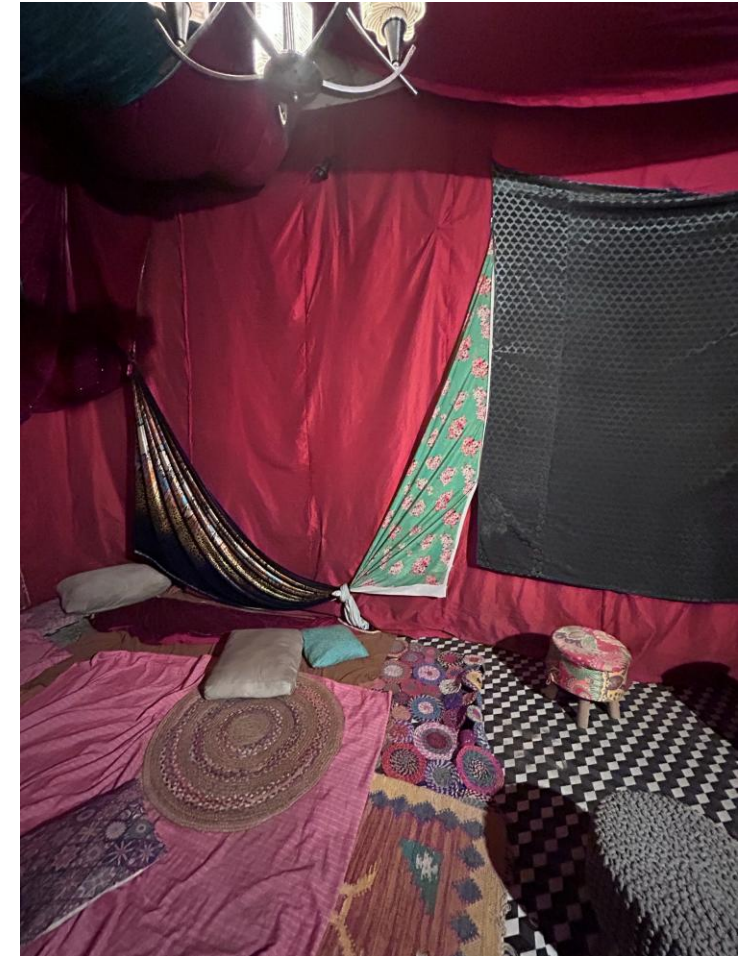
## JUNKYARD SETUP

A raw and edgy industrial-style setup featuring a vintage jeep, rugged tires, rusted metal props, and warehouse textures that create an authentic junkyard aesthetic. The open sky, distressed elements, and urban detailing give this set a cinematic and rustic vibe — perfect for fashion editorials, music videos, reels, pre-wedding shoots, automotive content, and bold storytelling visuals.



## BOHEMIAN SET

Perfect for fashion shoots, product photography, pre-wedding shoots, reels, and cultural storytelling, this set offers a blend of simplicity, charm, and visual richness.





## Glass House

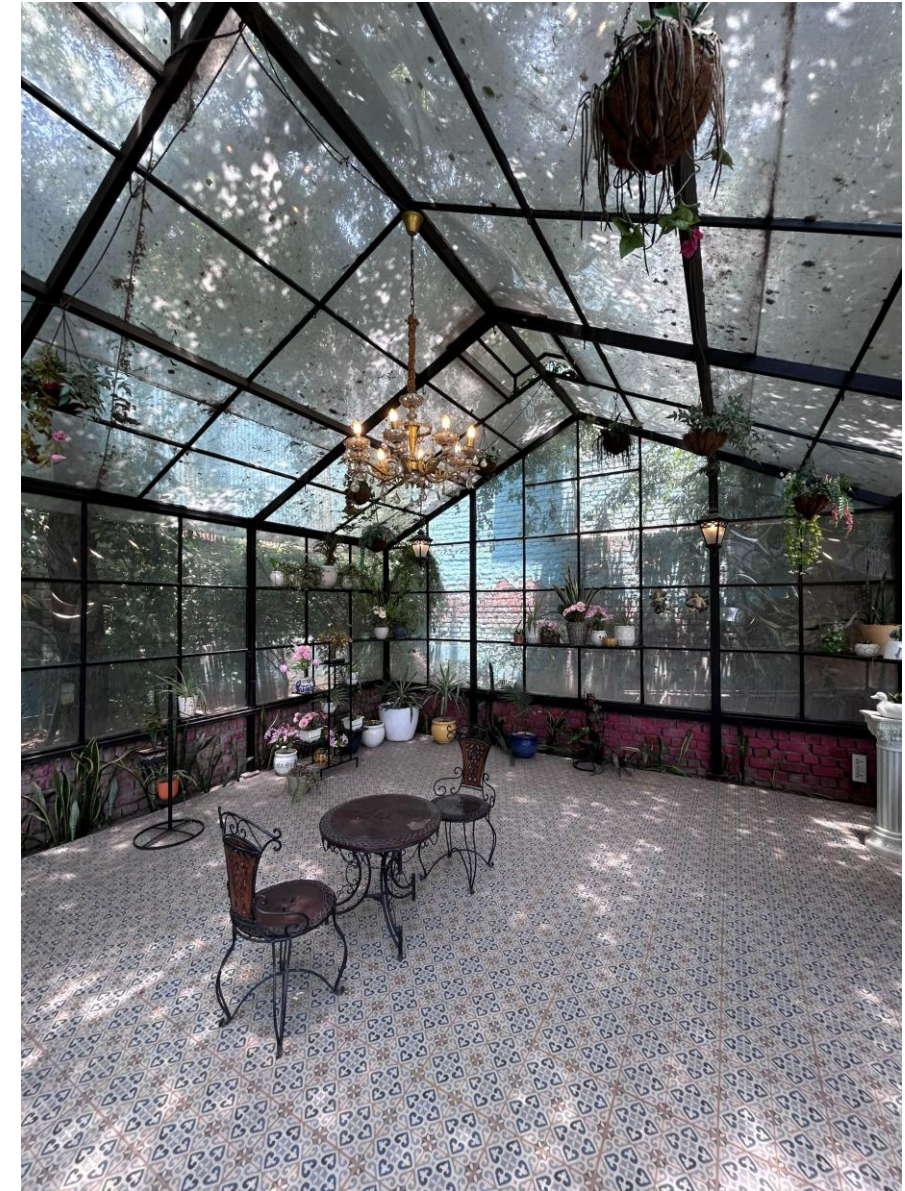
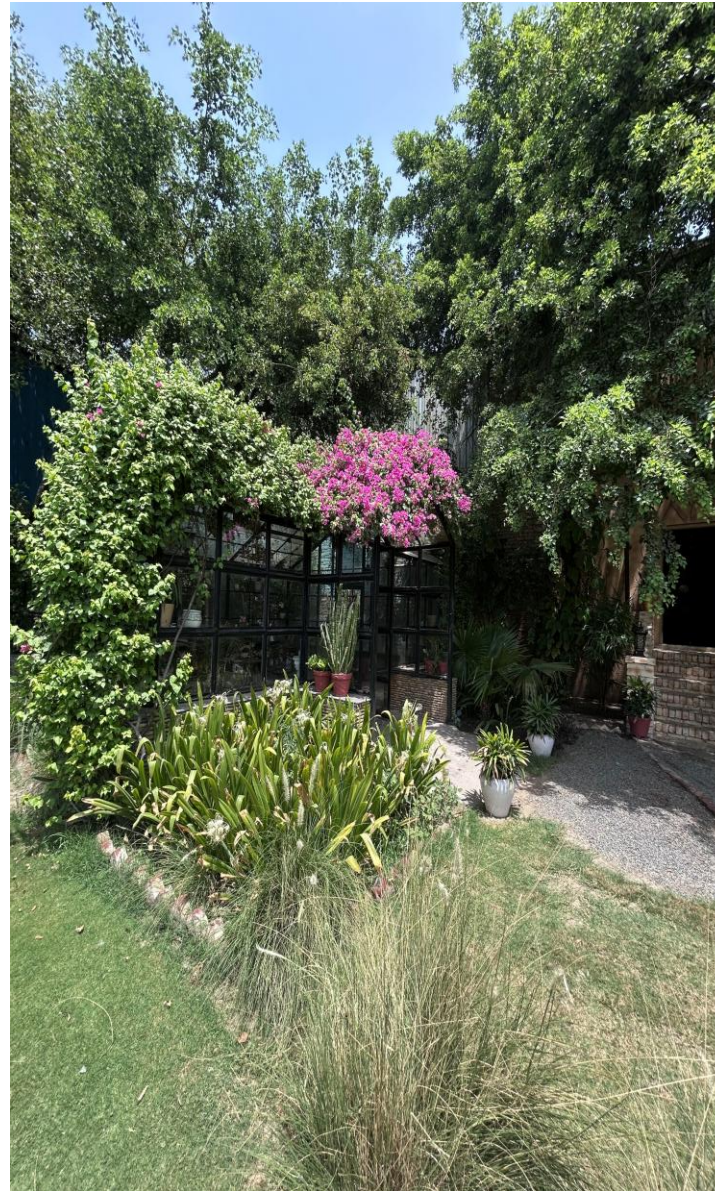
This glass house setup gives a dreamy botanical greenhouse vibe with a mix of rustic elegance and natural charm. Surrounded by lush greenery, flowering vines, and sunlight filtering through the glass panels, the space feels calm, cinematic, and aesthetically rich.





## Glass House

The setup combines a European greenhouse aesthetic with a tropical garden atmosphere, making it ideal for soft, elegant, and nature-inspired productions.





## Coffee House

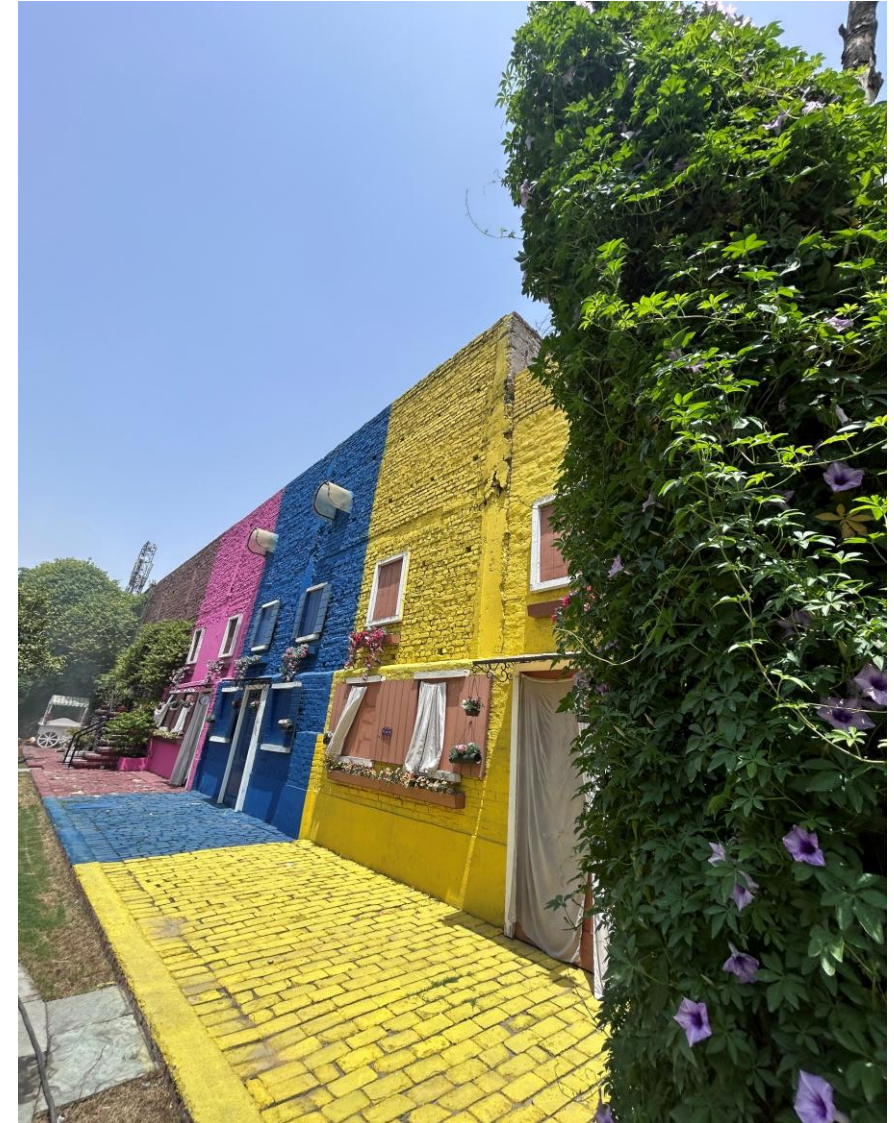
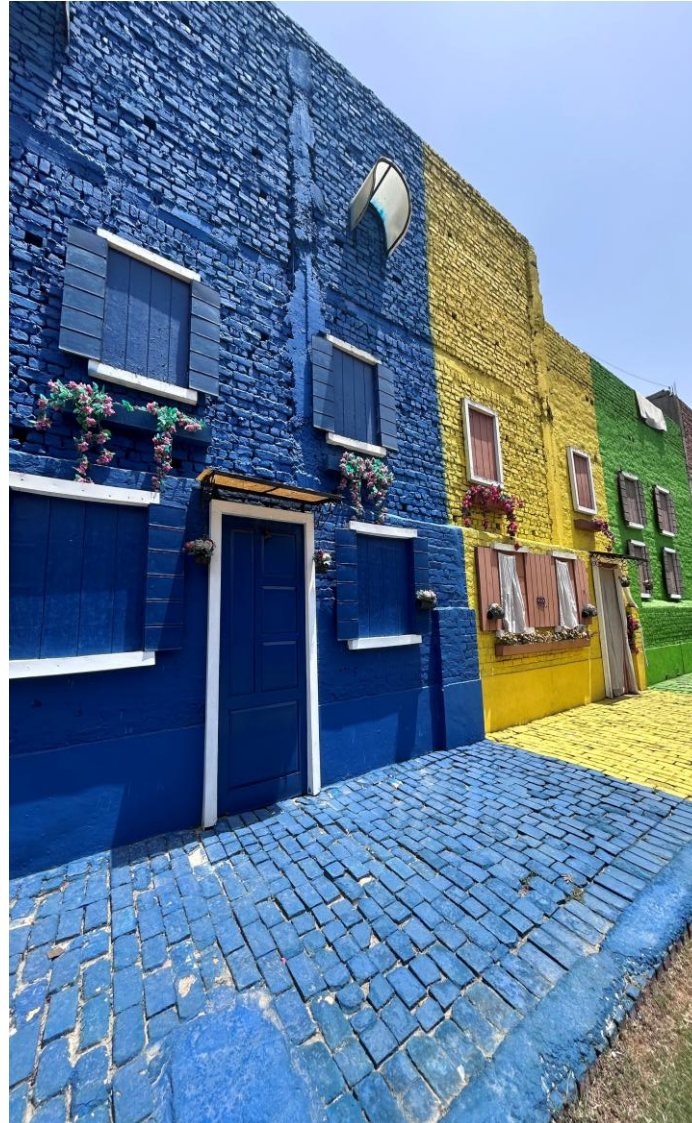
A charming café-style setup with curved stone steps, vintage doors, and lush greenery all around, creating a cozy European courtyard vibe. The soft natural lighting and rustic textures make it perfect for romantic, candid, and aesthetic lifestyle shoots.





## Burano Street

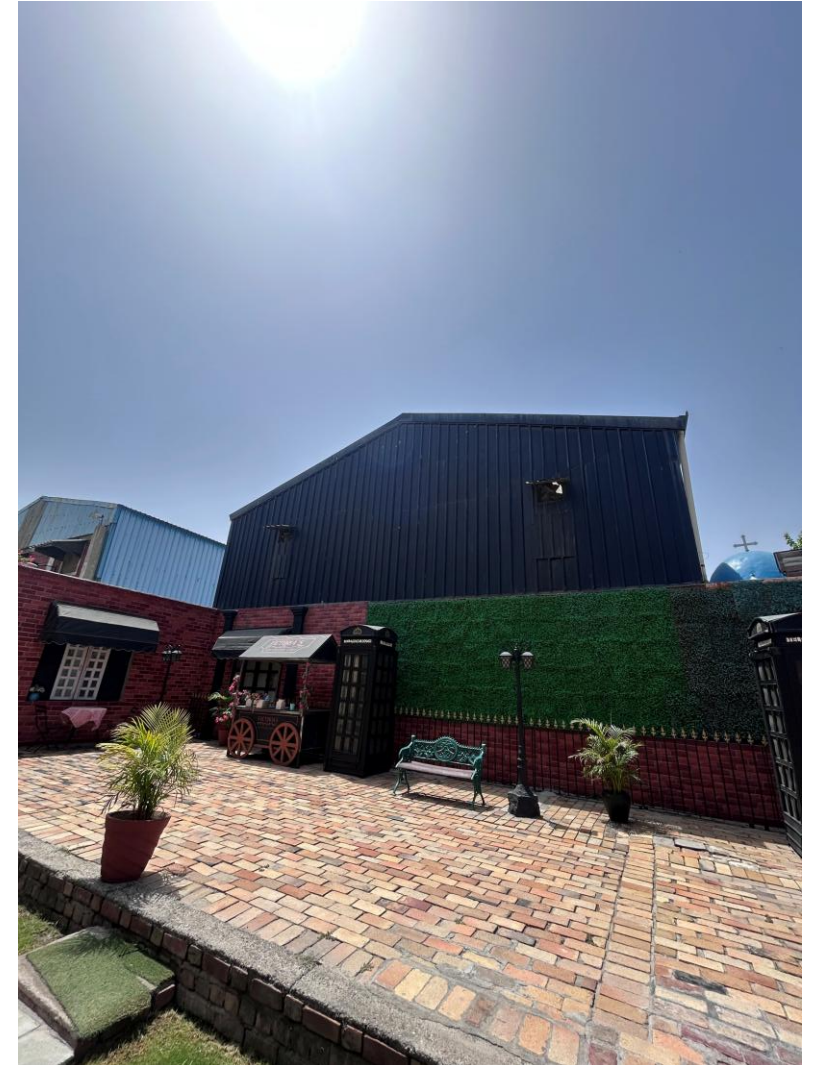
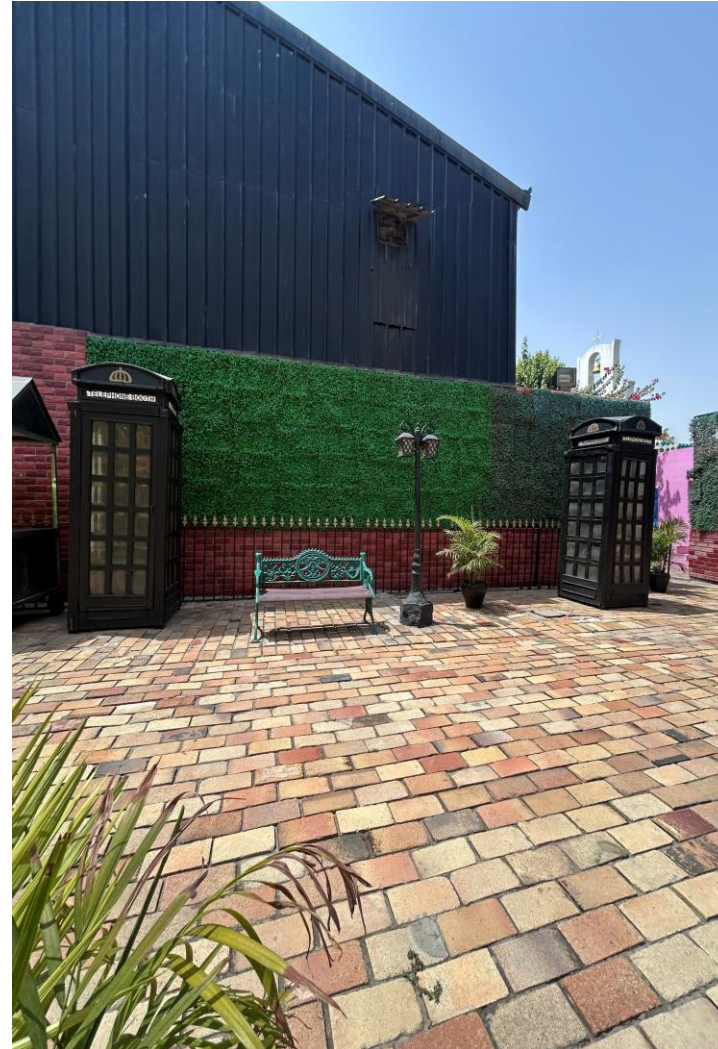
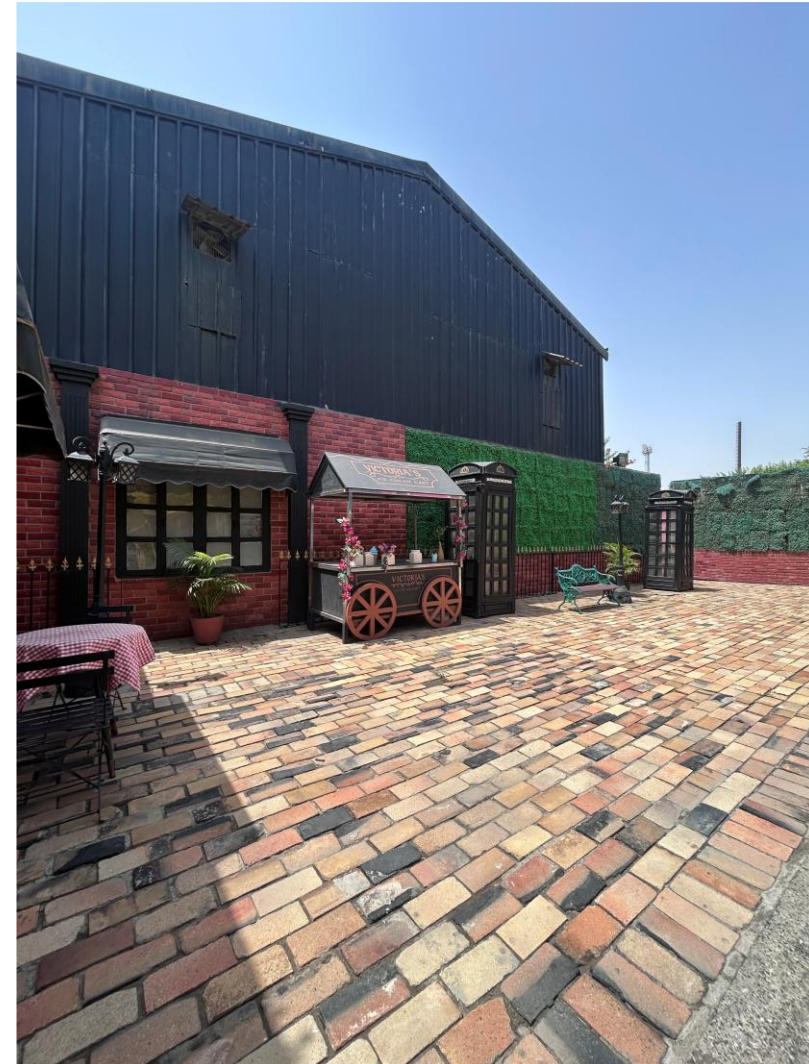
A vibrant street-inspired setup featuring colorful facades and cobblestone pathways, inspired by the iconic streets of Burano, Italy. The bold colors and cinematic alleyway feel create a playful, lively, and travel-themed shoot location





## London Street

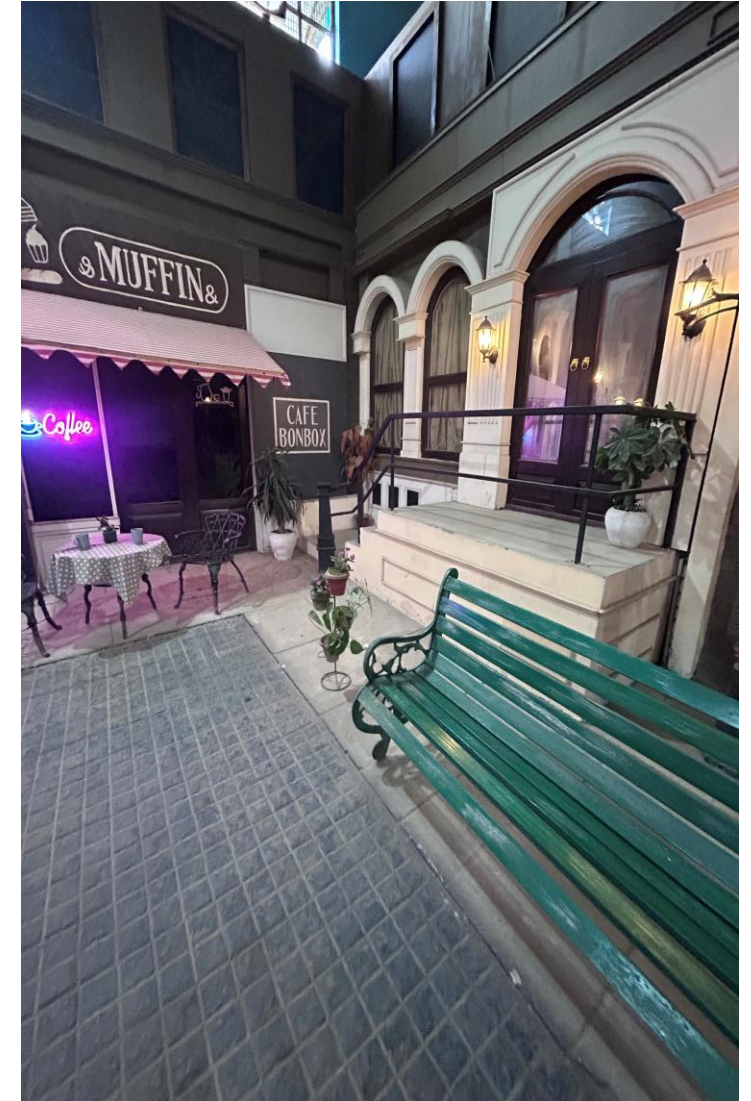
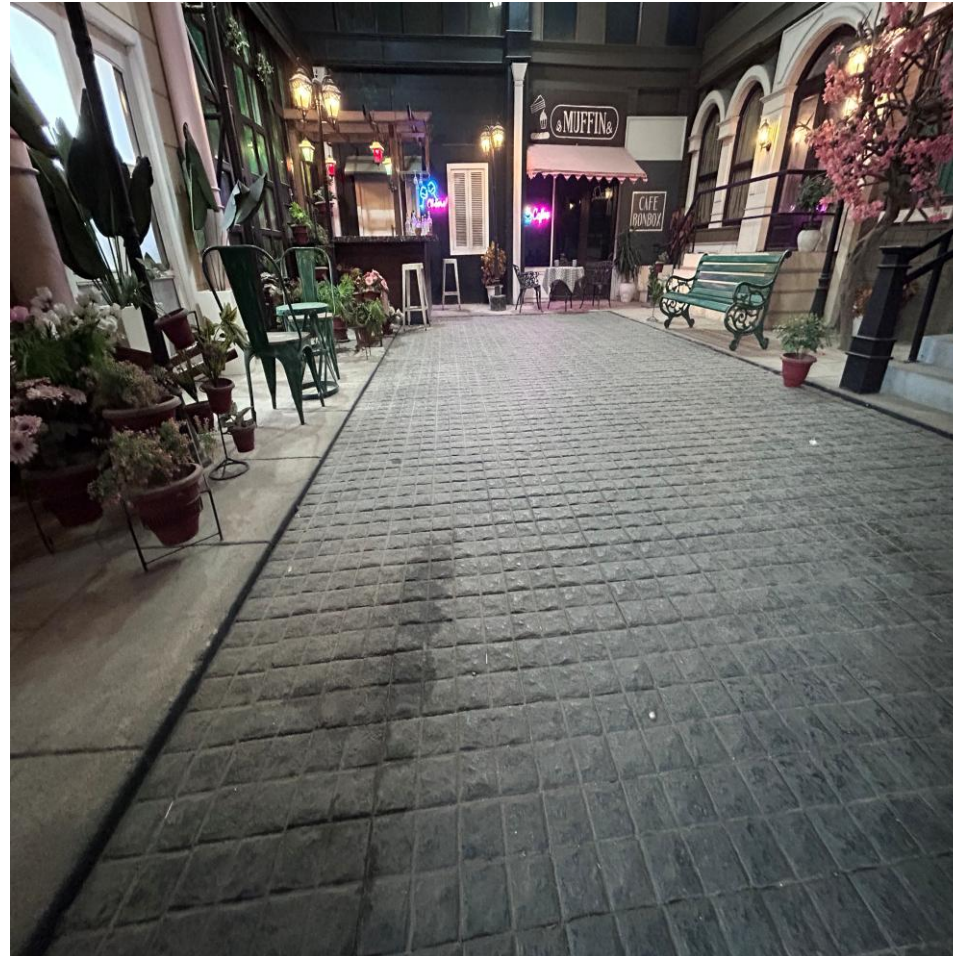
A spacious European-style street setup featuring vintage windows, cozy café tables, classic chairs, and charming urban details. The iconic telephone booth and rustic ice cream cart add a cinematic old-city vibe, making the space perfect for fashion, pre-wedding, and lifestyle shoots. The wide pathways and textured flooring create an elegant and realistic street-market atmosphere.





## NEW YORK TOWN

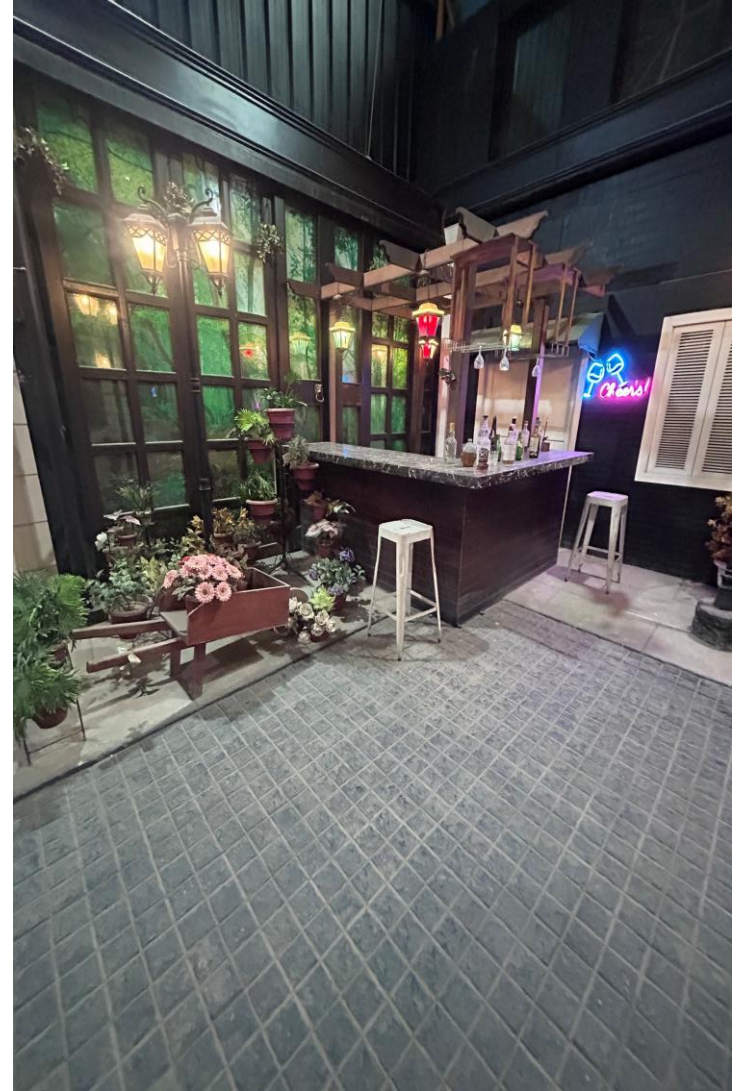
A cinematic city-street setup inspired by the lively charm of New York nightlife and urban cafés. The space features beautiful pink flower trees, stylish café corners, elegant staircases, and detailed townhouse-style facades that create a rich metropolitan vibe





## NEW YORK TOWN

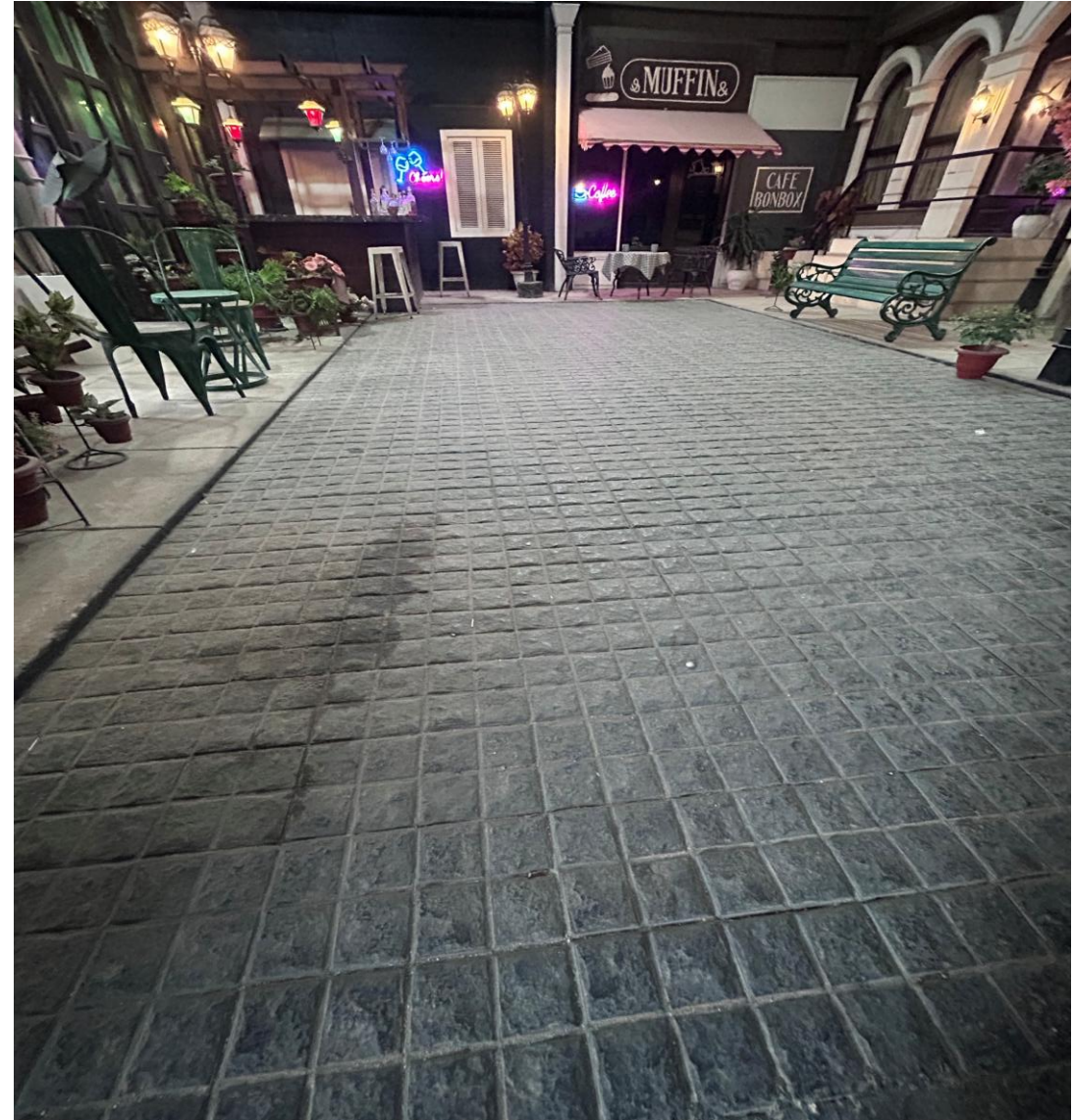
Warm ambient lighting, benches, and decorative storefronts add depth and realism to the setup. The vintage-style bar area and cozy seating corners make it perfect for fashion, music video, and luxury lifestyle shoots.





## NEW YORK TOWN

The blend of urban architecture and aesthetic street décor gives the location a premium international feel. Wide walkways and layered backgrounds allow for multiple creative shooting angles in a single frame.





## European Street

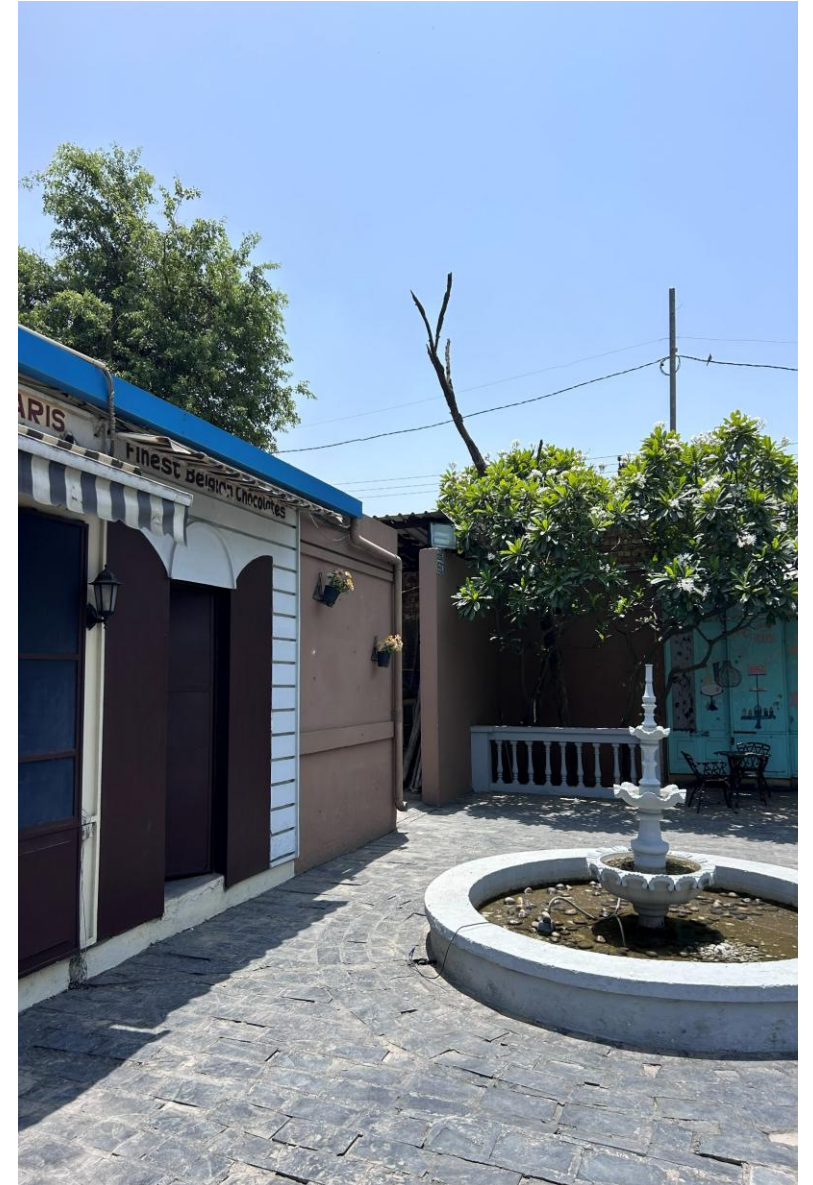
This European street setup captures the charm of a quaint old-town alley with colorful café facades, cobblestone pathways, and rustic storefronts. The vibrant doors, vintage barrels, and open courtyard seating create a cinematic European market vibe perfect for lifestyle and fashion shoots





## European Street

With its elegant architecture and cozy street aesthetics, the setup feels warm, stylish, and timeless



## Picnic Theme

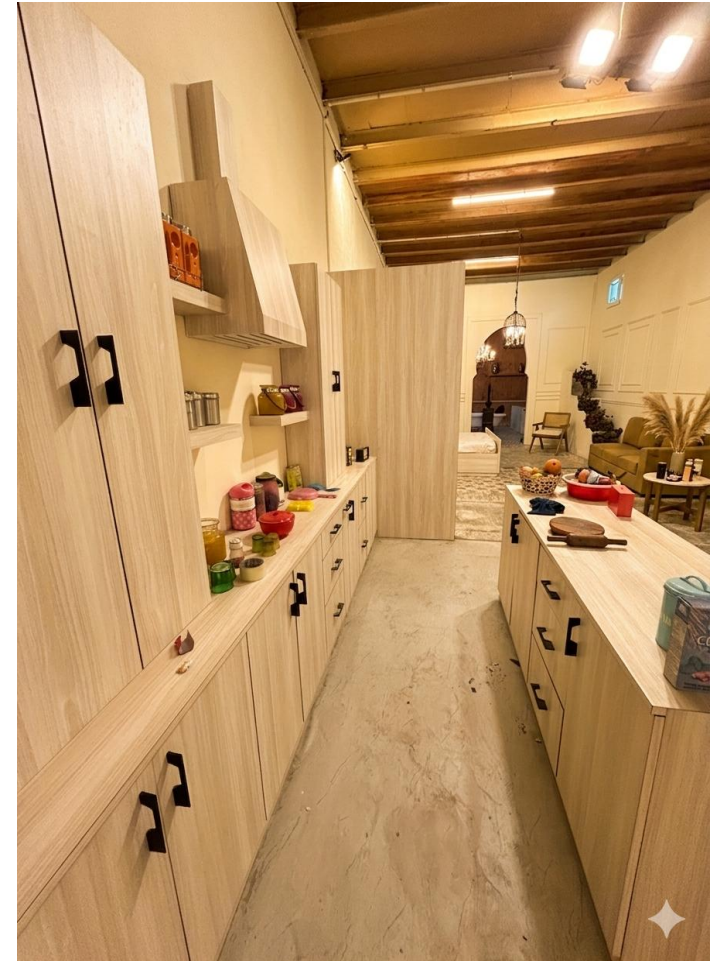
This picnic-themed setup creates a cozy and cheerful outdoor vibe surrounded by lush greenery and blooming flowers. Styled with soft rugs, colorful cushions, vintage trunks, and decorative props, the space feels warm, playful, and aesthetically rich. Perfect for family shoots, kids' photography, brunch concepts, and candid lifestyle moments, the setup blends nature with a dreamy bohemian picnic atmosphere.





## The Cozy Apartment

A warm modern apartment-style setup designed with elegant interiors, soft earthy tones, and contemporary décor elements. Featuring a stylish kitchen, cozy lounge space, textured flooring, and aesthetic arch details, the set creates a luxurious yet homely vibe





## The Cozy Apartment

The natural layout and cinematic lighting make it perfect for lifestyle shoots, fashion campaigns, family portraits, and content creation. Its versatile modern aesthetic blends comfort, sophistication, and realism beautifully on camera.





## PINK FLORAL WALL

A whimsical pastel courtyard with floral murals, hanging swings, blooming bougainvillea, and vintage seating — creating the perfect romantic and Instagram-worthy shoot location.





## VINTAGE WHITE CAFÉ WALL

A dreamy European-style courtyard with white rustic walls, blooming vines, cobblestone flooring, vintage benches, and lush greenery — giving timeless Mediterranean street aesthetics for premium photoshoots and reels.





## BLUE MAJESTIC SETUP

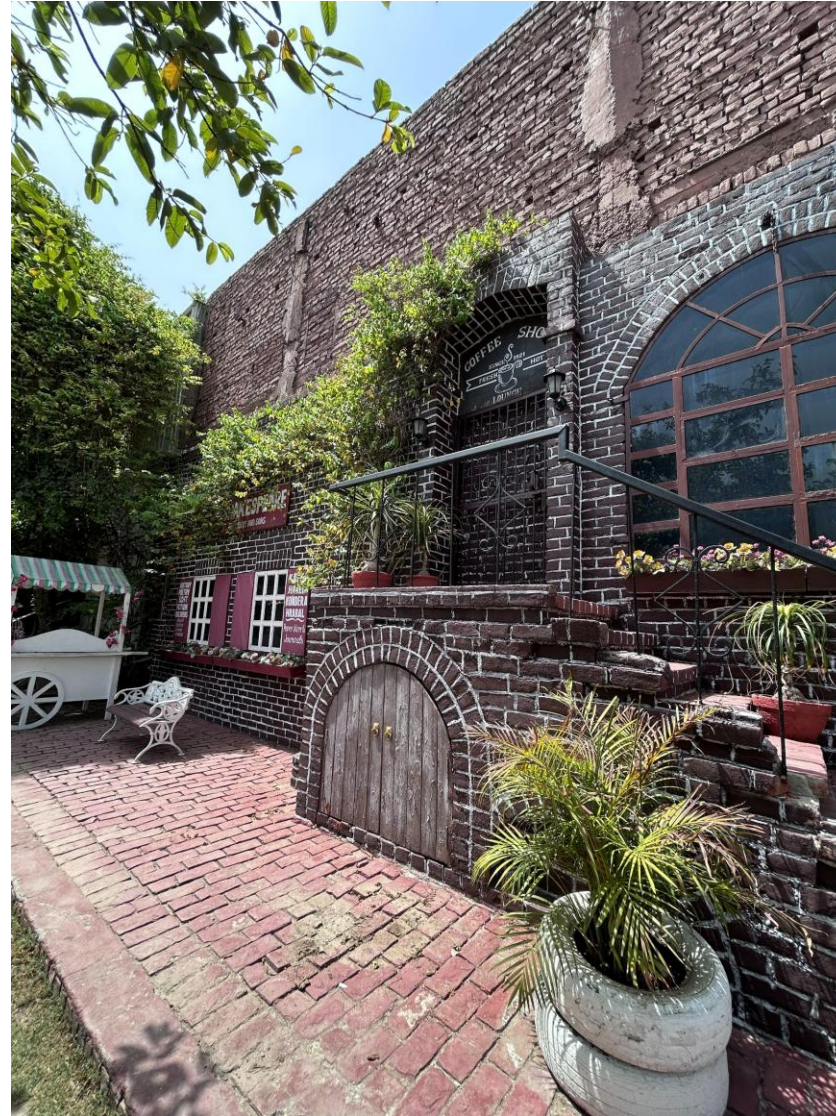
Step into a regal, immersive space designed with rich blue patterned walls that exude elegance and grandeur. Inspired by royal courtyards, this setup features intricate arch windows, detailed textures, and a serene water-style flooring that reflects light beautifully, adding depth to every frame. The central swing element enhances the visual drama, making it a perfect focal point for storytelling. Delicate floral accents scattered across the floor add a soft, romantic touch, balancing the boldness of the deep blue palette.





# Shakespeare Wall

A vintage Europea featuring rustic brick walls, grand arched windows, and lush greenery that create a timeless royal charm. The textured architecture and open walkway add depth, making the space perfect for cinematic portraits, fashion shoots, and storytelling visuals.





## Moroccan + Bulb Wall + Swing

Moroccan Arch Set - Inspired by classic Moroccan interiors, this setup features elegant arches, patterned flooring, warm earthy textures, and chandelier lighting that create a royal heritage feel

Bulb Wall Set - A dramatic mood-lit setup designed with rustic wooden textures and glowing bulb lights that add warmth and character to every frame.

Garden Swing Set - A peaceful outdoor-inspired setup featuring a minimal wooden swing surrounded by greenery and natural light.





## Air conditioned Makeup Rooms

Our spacious air-conditioned makeup rooms are thoughtfully designed to provide comfort, convenience, and a hygienic experience for every client and crew member. Equipped with professional makeup stations, well-lit mirrors, comfortable sofas, cooling fans, and AC facilities, the space ensures a relaxed prep environment throughout the shoot. The room also includes an attached changing room and washroom for complete privacy and ease. Clean, well-maintained, and artist-friendly, the setup is perfect for long shoot hours and seamless styling sessions.

